

TOILET SEAT INSTALLATION INSTRUCTIONS

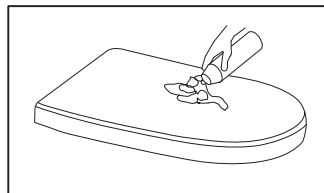
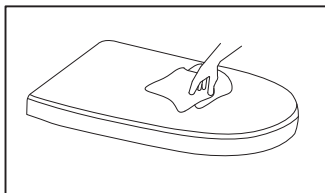
JohnsonSuisse
Bathroom Solutions

These instructions are for the following toilet seat models:
'Venezia' seat JSEV101
'Esti' seat MSEE101

1. BEFORE INSTALLATION

- Before installation check that the seat and the hinge bolts are a suitable fit on the toilet bowl.
- Please read these instructions carefully to ensure trouble-free fitting of the seat.
- Please retain the instructions for future reference

2. MAINTENANCE

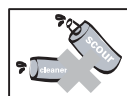


- Regularly wipe the seat using a damp cloth and mild detergent
- For convenience the seat may be removed by depressing the two hinge buttons and lifting the seat up (see Diagram 6 on the next page).
- With the seat removed, the area around the hinge mounts can be easily cleaned.
- Avoid spilling cosmetics and solvents as this can permanently stain the surface finish
- Periodically check the tightness of the hinge fixing screws.

3. CAUTIONS



To maintain the life span of the soft-close function do not forcibly close the seat or cover



Do not clean the seat or cover with strong chemical cleaners, scouring abrasives or stiff brushes as these may ruin the polished surface.

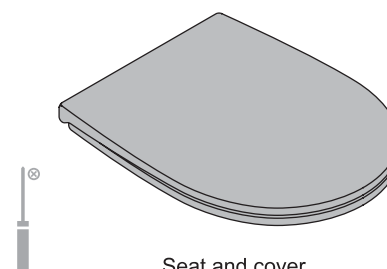


Do not place heavy objects on the cover and avoid dropping items onto the seat.

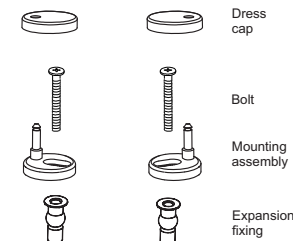


Where possible avoid installing in locations subject to strong sunlight or high temperature.

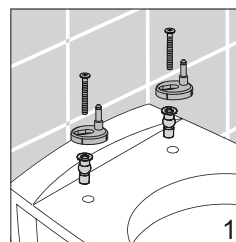
4. INSTALLATION STEPS



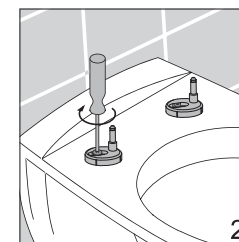
Seat and cover



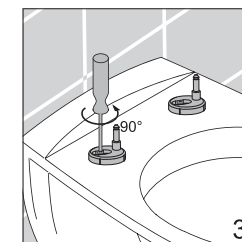
Hinge set



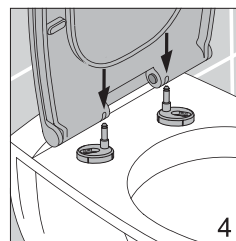
1
Insert the fixing plugs and fit the hinge fixtures



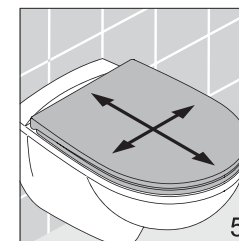
2
Tighten the screws



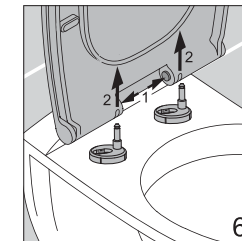
3
Loosen the screws by turning 90° anti-clockwise



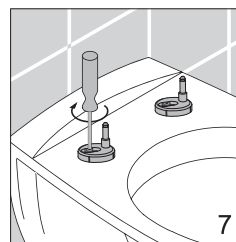
4
Align the pins and clip on the seat assembly



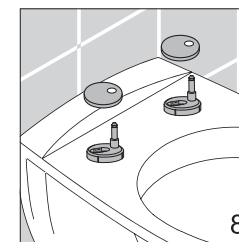
5
Align the seat with the WC bowl



6
Press both push-buttons and remove the seat and cover



7
Tighten the screws



8
Fit the cover caps onto the hinge fixtures



9
Clip on the toilet seat and cover

BATHROOM PRODUCTS AUSTRALIA P/L
ABN 87 079 297 617
2/97 BANKSIA ST
BOTANY, NSW 2019

Tel: 1300 717 717
Fax: 1300 746 480
www.johnsonsuiss.com.au

0323